

---

**PUBLIC SCHOOLS of  
BROOKLINE**

Advisory Panel 4:  
Public Health, Safety, & Logistics

Meeting Slides

September 10, 2021

# Community Benchmarks - Status

<b>Benchmark</b> (each measured over prior 14 days)	Status 7/24/21	Status 8/7/21	Status 8/21/21	Status 9/4/21
<b>Avg. daily new case count in Brookline = &lt;10 per 100k people</b>	5.3	7.3	9.4	11.8
<b>Avg. daily new case count in Mass. = &lt;10 per 100k people</b>	5.3	12.2	17.4	21.1
<b>Avg. test positivity rate in Brookline = &lt;5.0%</b>	0.94%	1.11%	1.23%	1.04%
<b>Avg. test positivity rate in Massachusetts = &lt;5.0%</b>	1.46%	2.69%	2.83%	2.51%

*Panel 4 selected these four community transmission benchmarks in August 2020 as triggers for focused evaluation and discussion of whether changes in operations are warranted, not as definitive indicators of in-school risk or thresholds for automatic action. Research and PSB-specific data since that time have convincingly shown that in-school transmission risk can be kept very low even at high levels of community case incidence.*

# MA DPH Color Scale



Incidence Rate Color Table  
 Massachusetts Department of Public Health COVID-19 Dashboard - Thursday, November 12, 2020  
**Average Daily Incidence Rate per 100,000 Color Calculations**

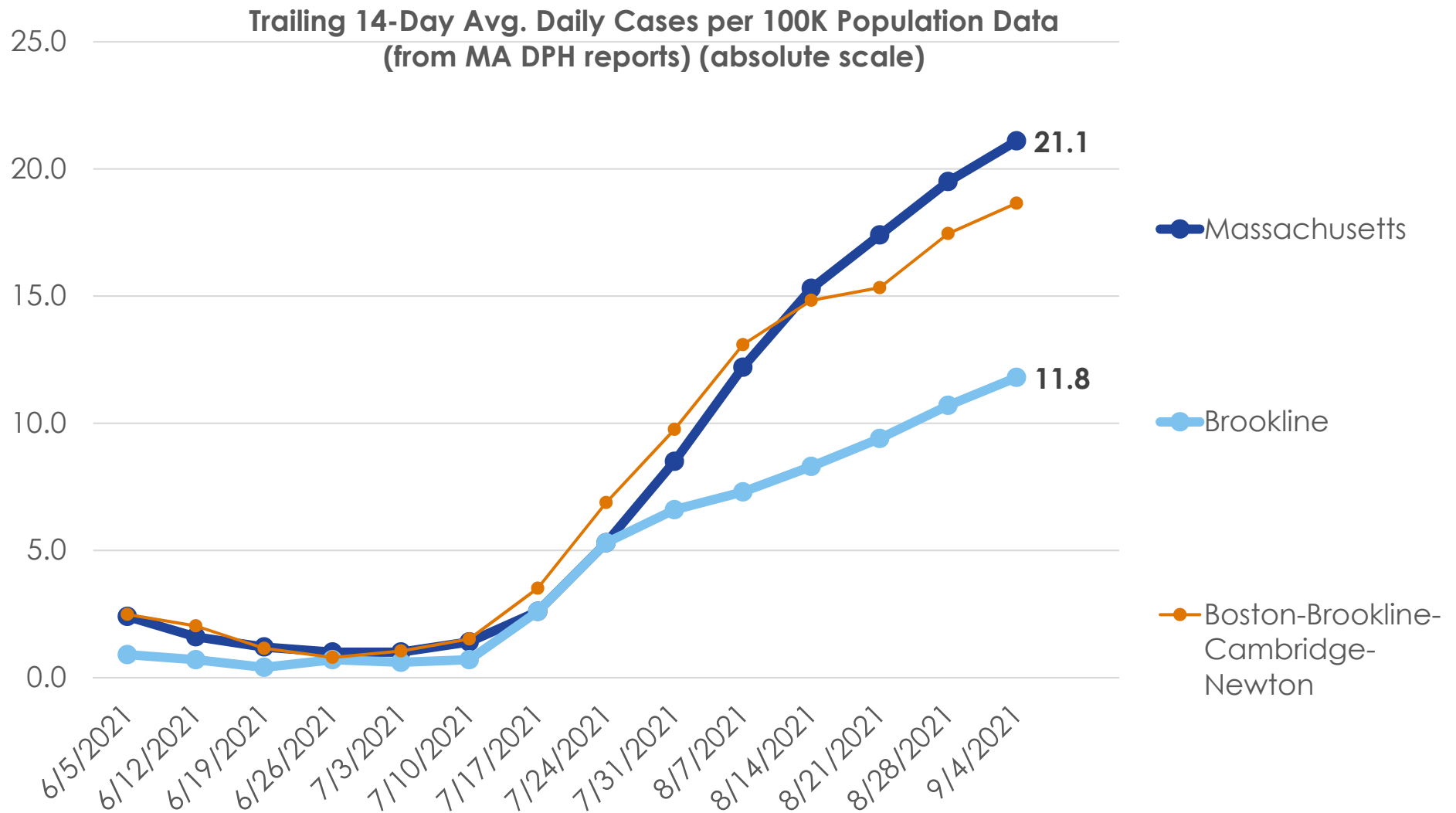
Group	Population		
	Under 10K	10K-50K	Over 50K
Grey	Less than or equal to 10 total cases	Less than or equal to 10 total cases	Less than or equal to 15 total cases
Green	Less than or equal to 15 total cases	<10 avg cases/100k AND >10 total cases	<10 avg cases/100k AND >15 total cases
Yellow	Less than or equal to 25 total cases	≥10 avg cases/100k OR ≥5% pos rate	≥10 avg cases/100k OR ≥ 4% pos rate
Red	More than 25 total cases	≥10 avg cases/100k AND ≥5% pos rate	≥10 avg cases/100k AND ≥4% pos rate

**Brookline is here as of 9/4/2021 (barely yellow)**

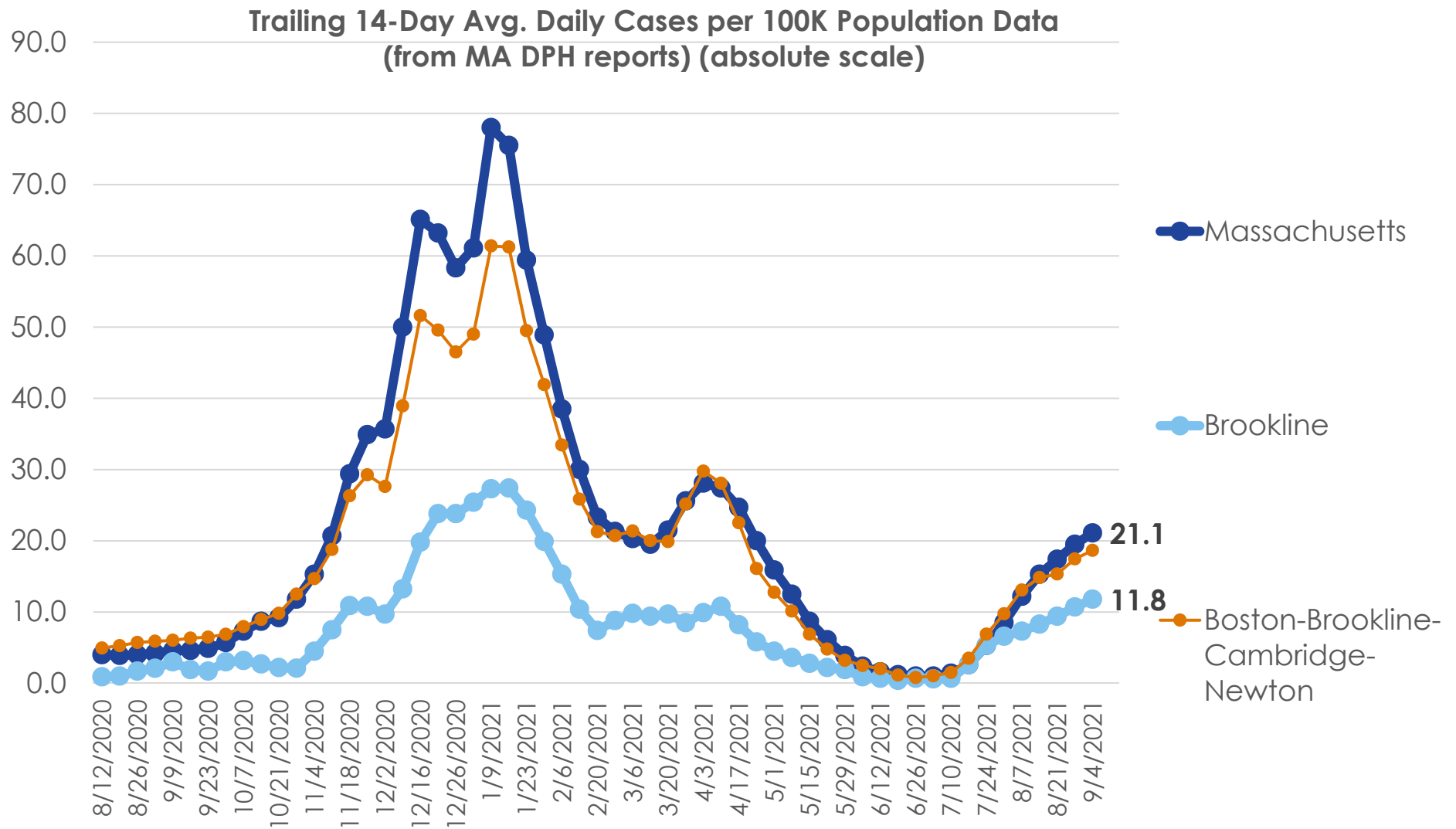
*Brookline's population is ~60,000*

As of 11/5, DPH is using 2019 population estimates derived from a method developed by the University of Massachusetts Donahue Institute. The 2019 estimates are the most currently available data.

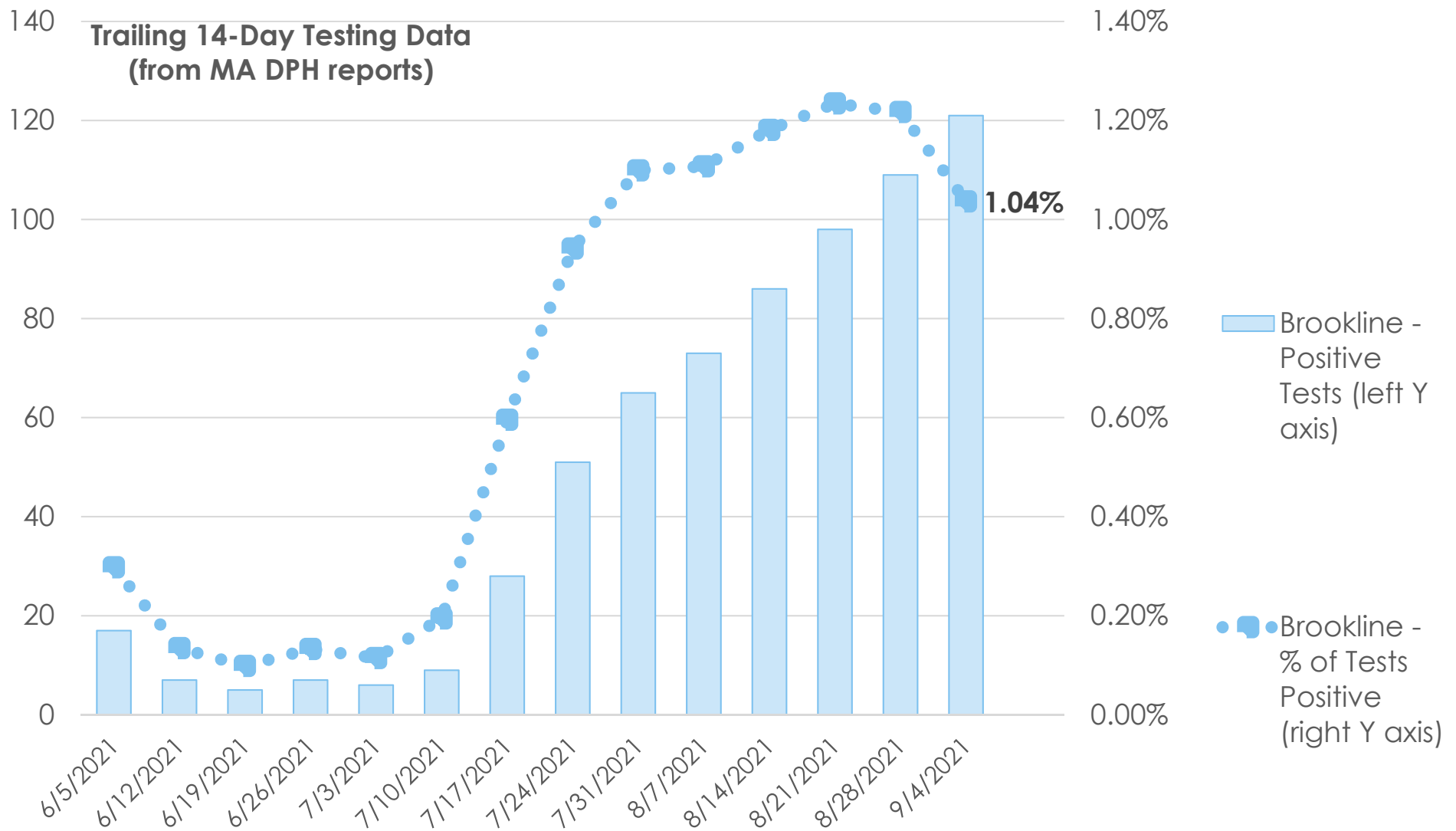
# Trends: Avg. Daily New Cases per 100k



# Trends: Avg. Daily New Cases per 100k

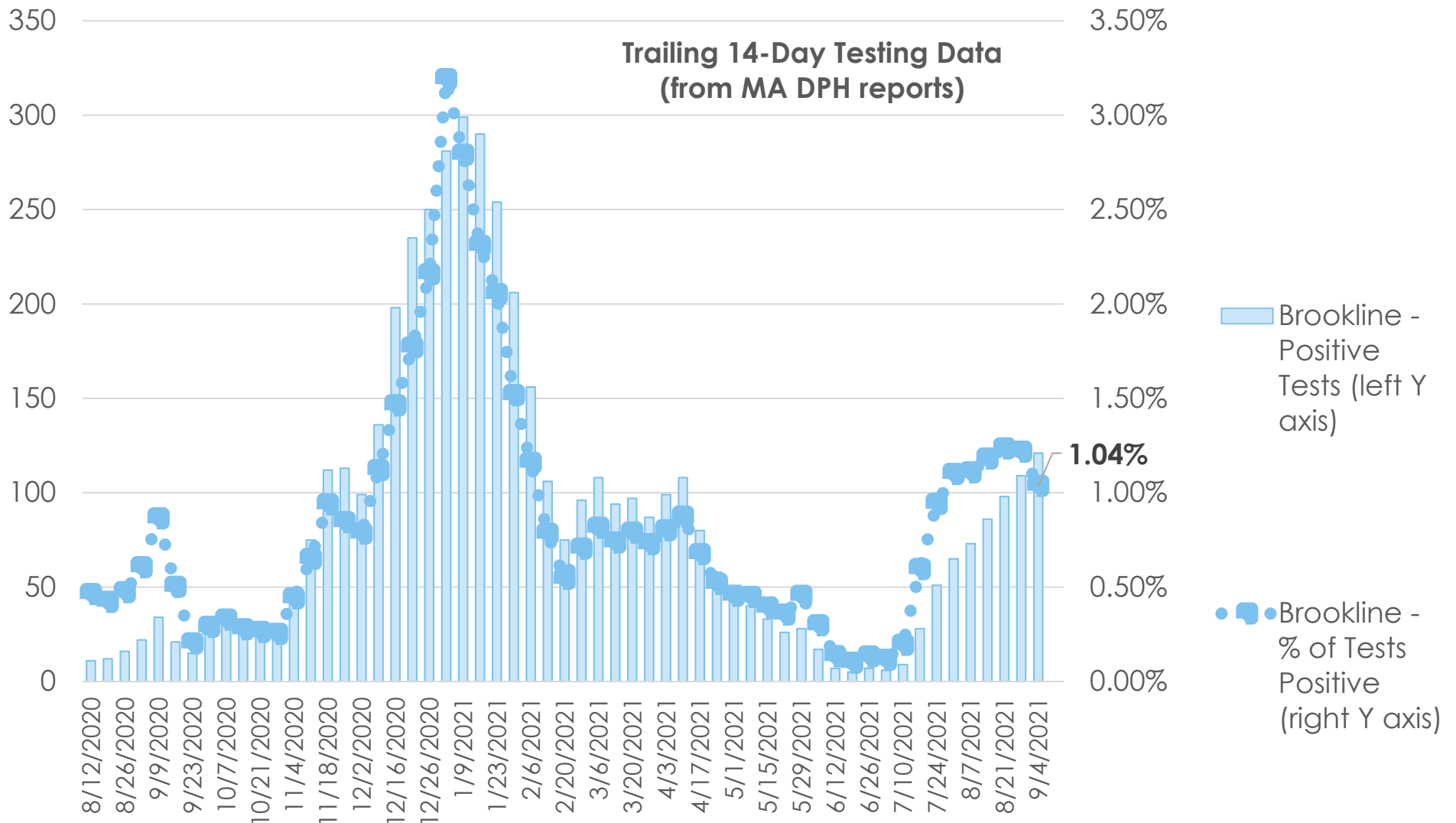


# Trends: Test Positivity (Brookline)

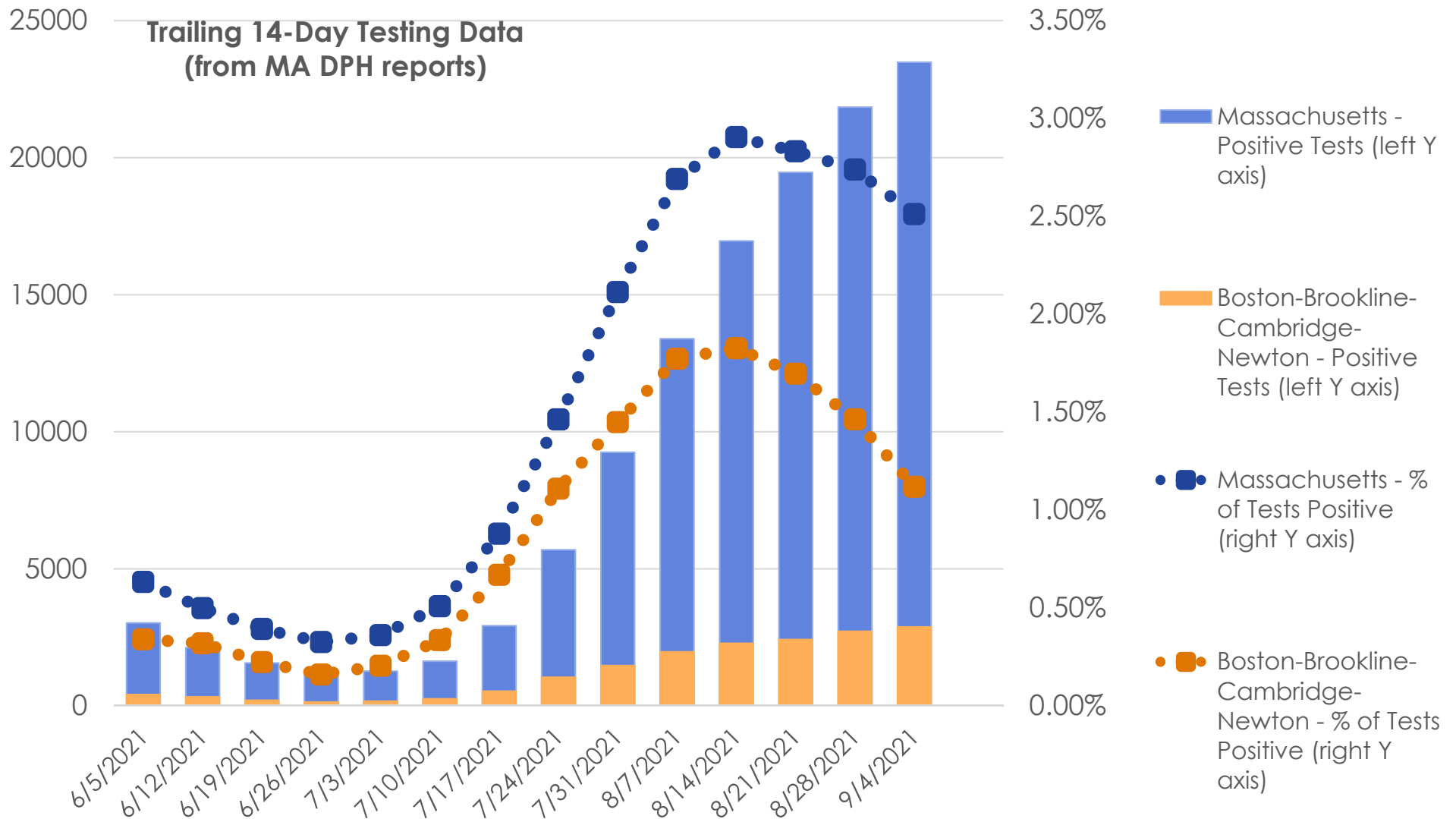


Data source: <https://www.mass.gov/info-details/covid-19-response-reporting>

# Trends: Test Positivity (Brookline)



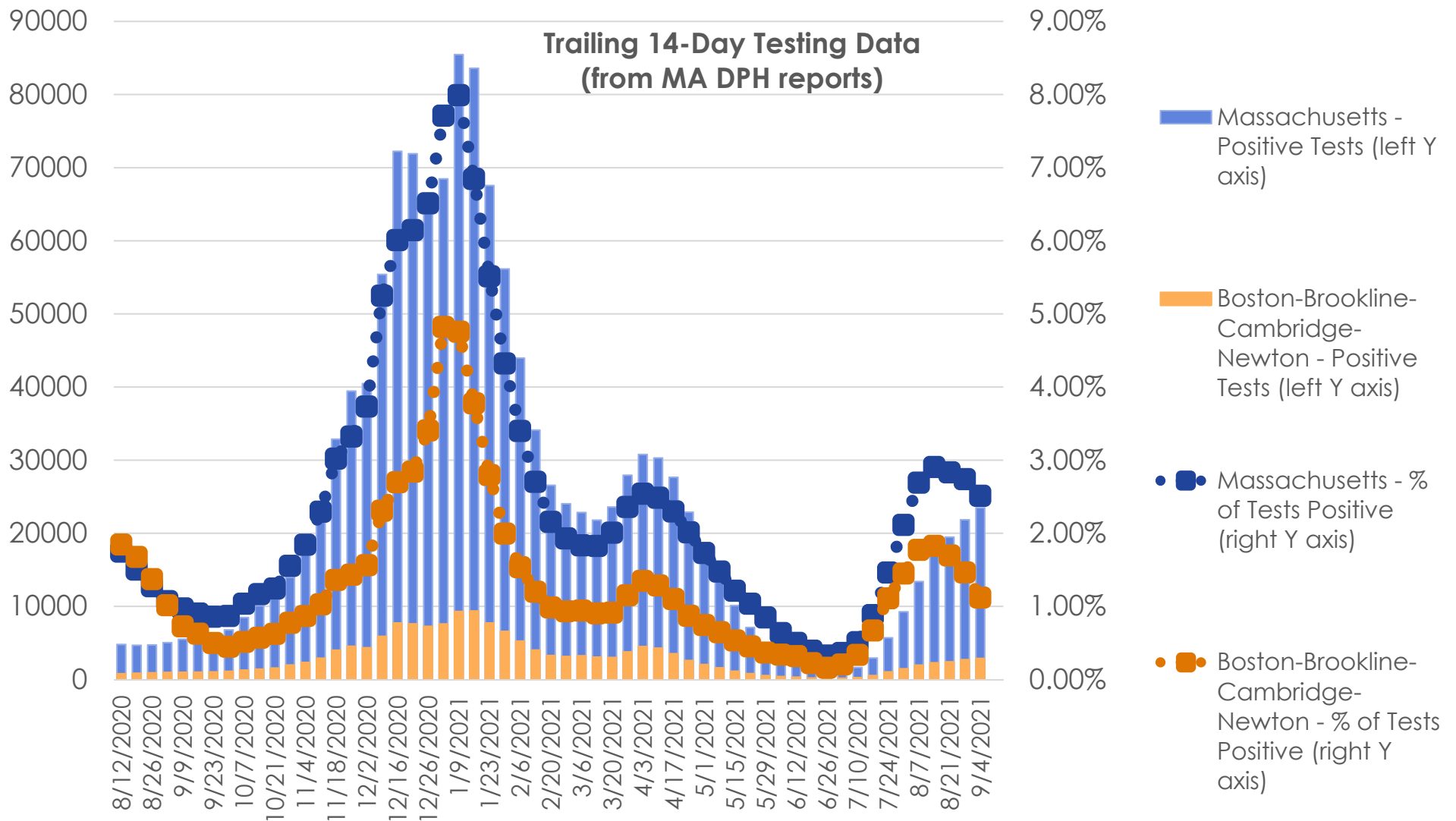
# Trends: Test Positivity (Statewide)



Data source: <https://www.mass.gov/info-details/covid-19-response-reporting>

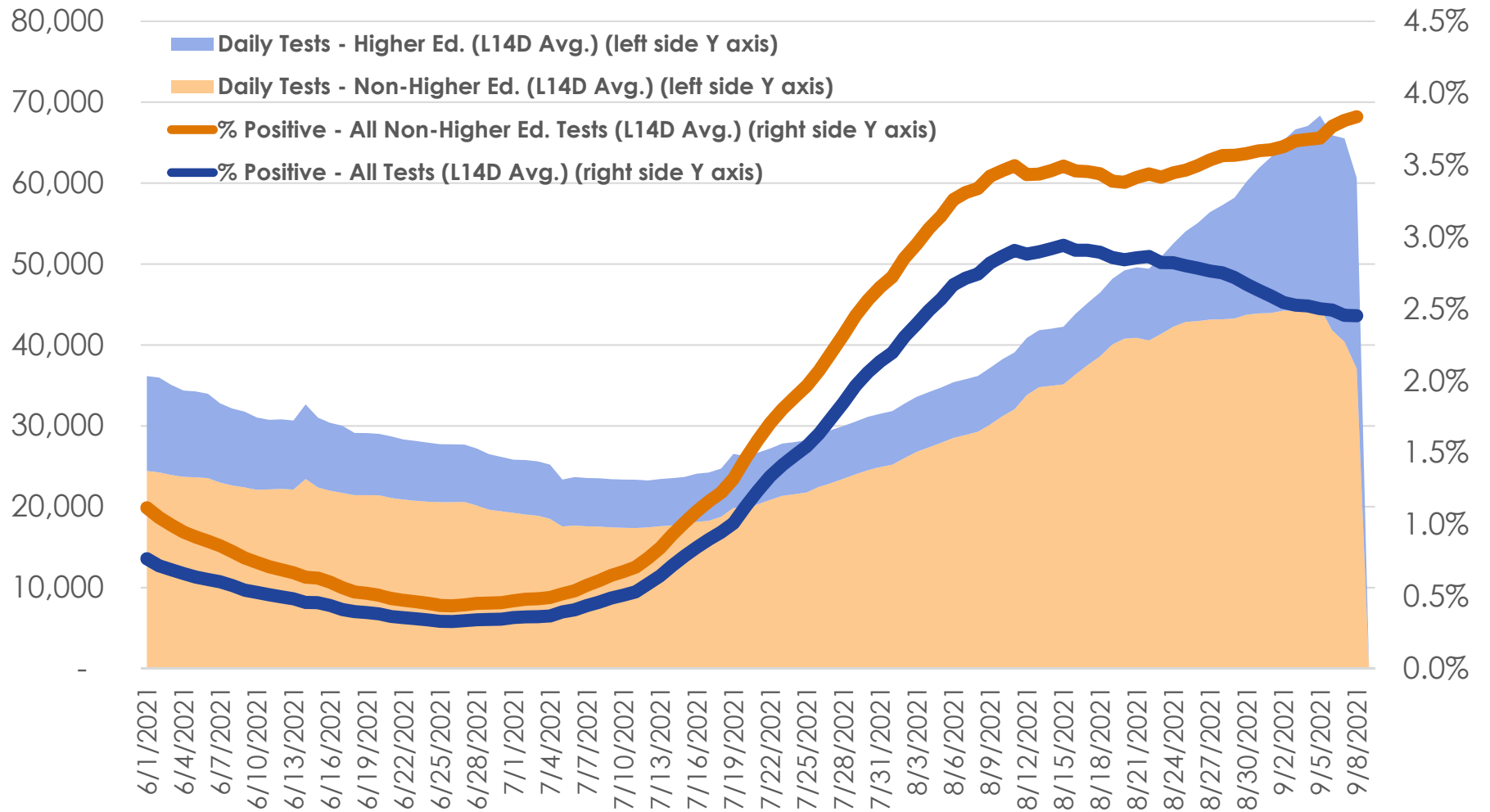


# Trends: Test Positivity (Statewide)



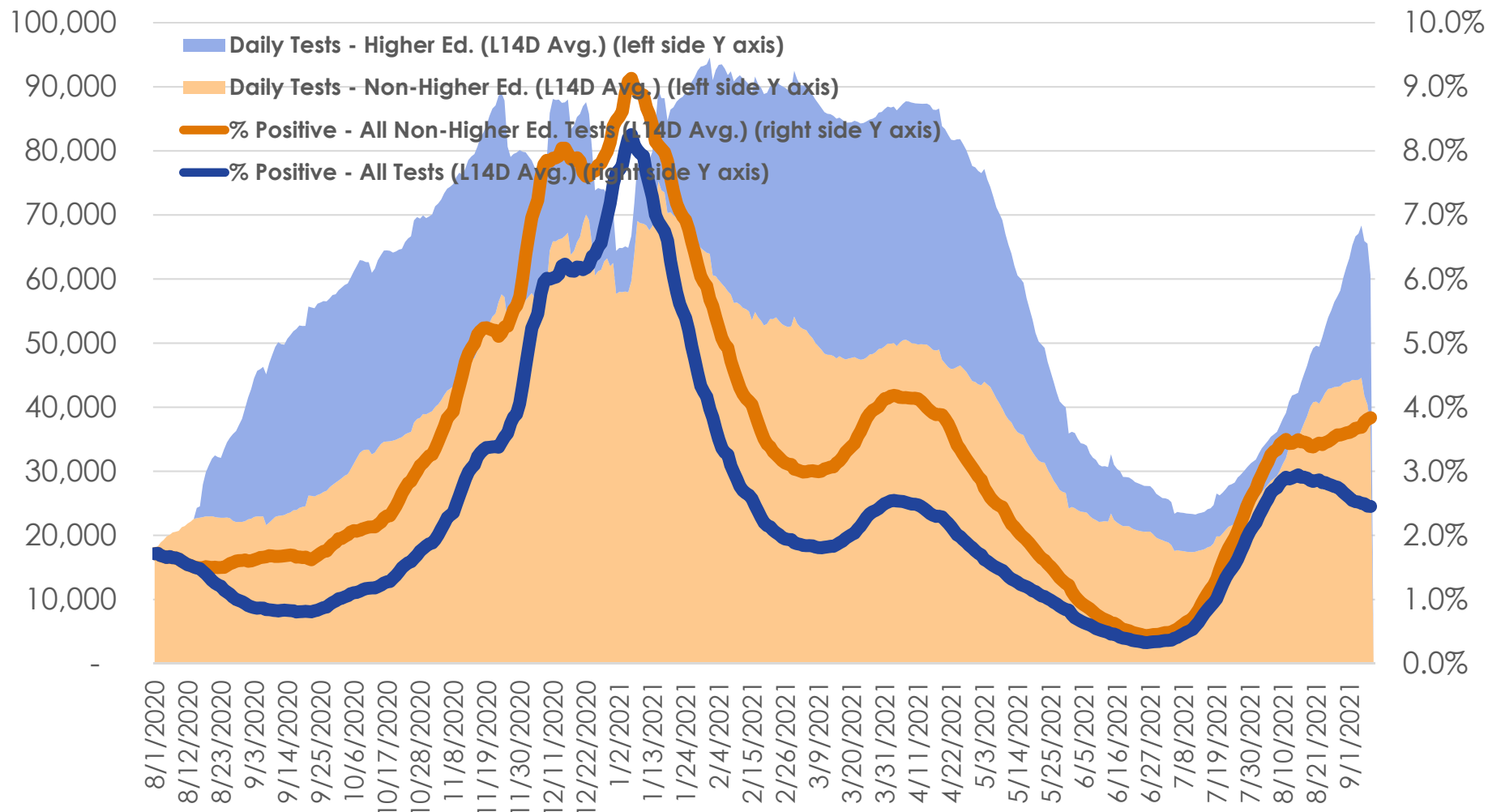
# Trends: Test Positivity and Testing Volume (Statewide)

MA Statewide Test Positivity and Volume

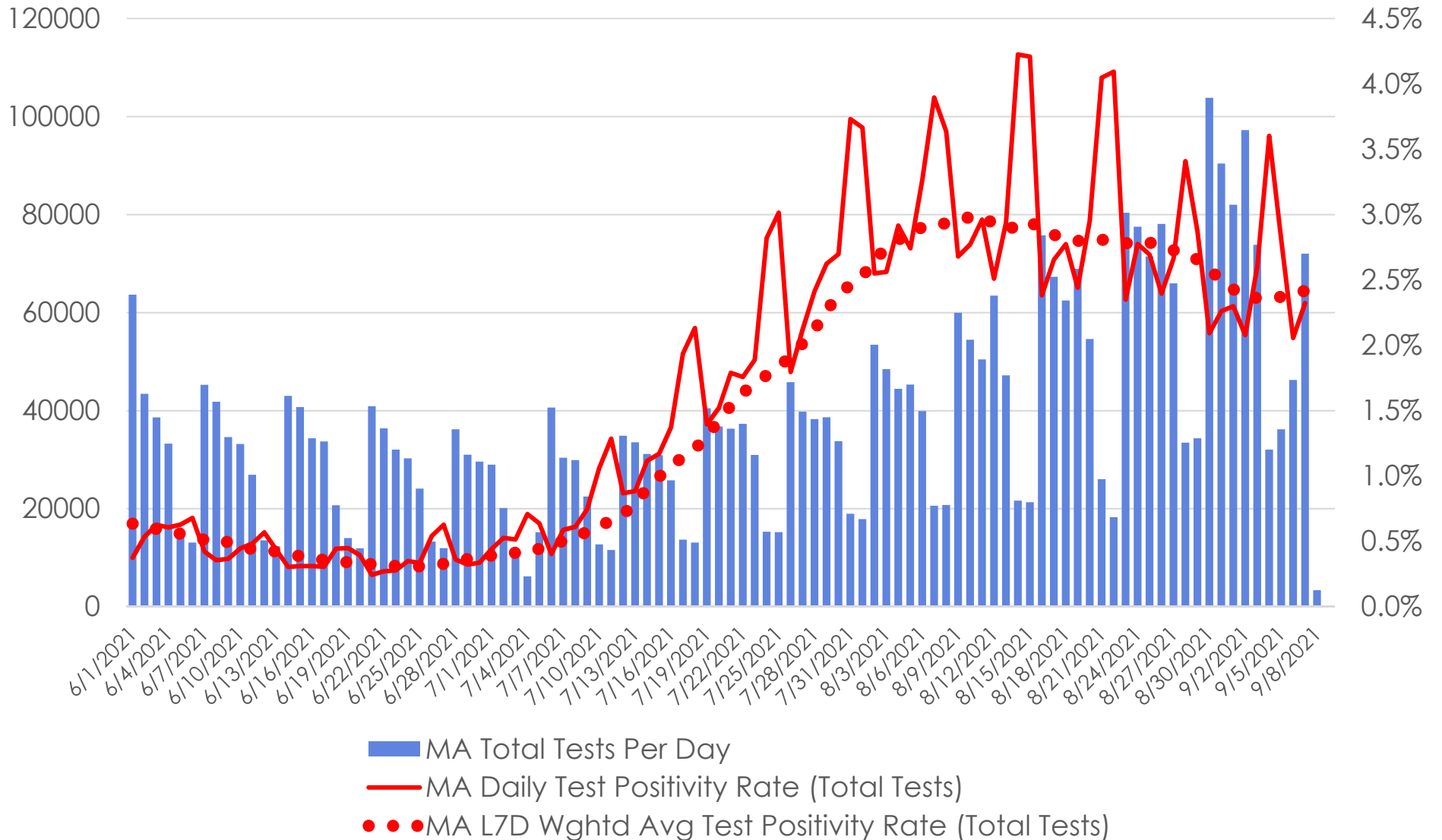


# Trends: Test Positivity and Testing Volume (Statewide)

MA Statewide Test Positivity and Volume

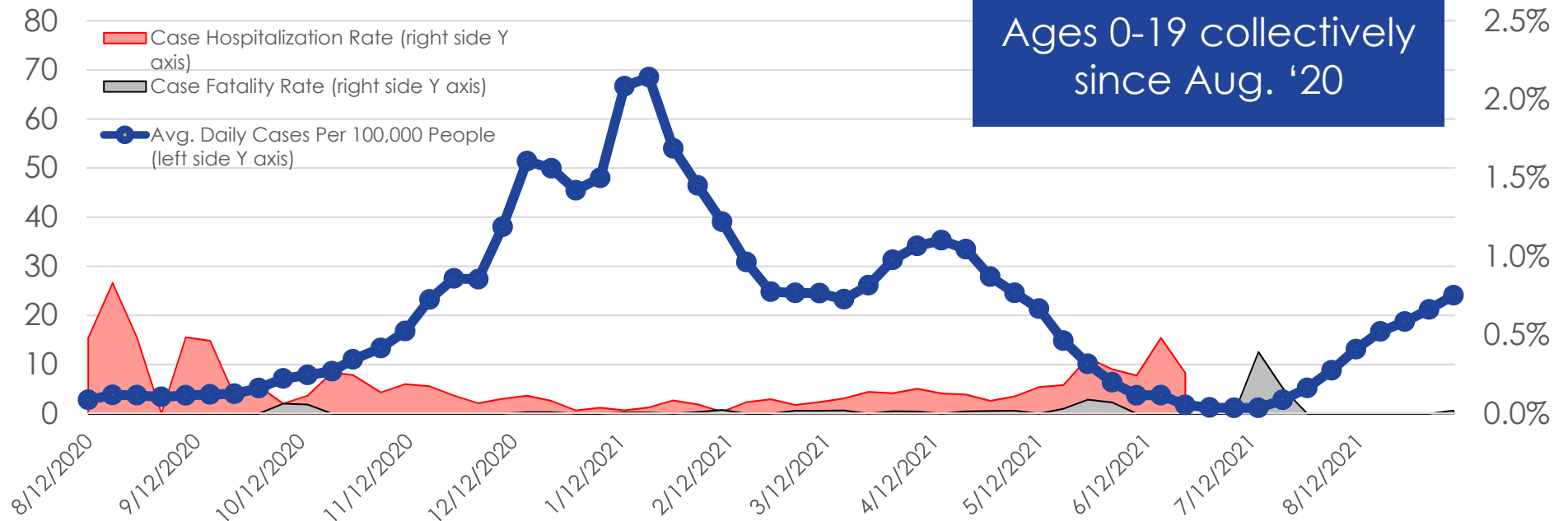


# Trends: Daily Test Volumes and Positivity (Statewide)



Data source: <https://www.mass.gov/info-details/covid-19-response-reporting>

# Trends: 0-19 Year-Old Age Cohort (MA Statewide)



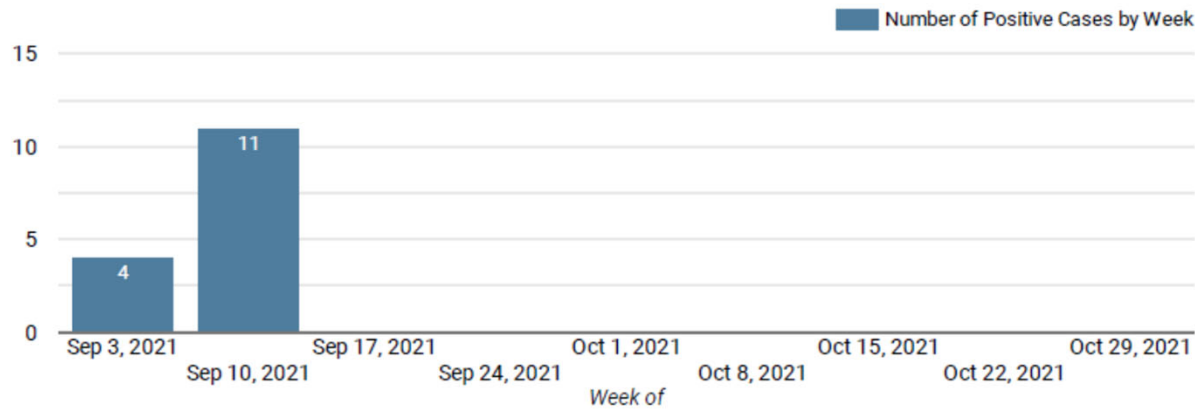
Total Cases (Avg. Daily per 100k Pop.)	5/30 – 6/12/2021	7/18 – 7/31/2021	8/22 – 9/4/2021
<b>&lt;5 yo (unvaxxed)</b>	157 (3.1)	370 (7.4)	1,077 (21.5)
<b>5-9 yo (unvaxxed)</b>	190 (3.7)	502 (9.7)	1,363 (26.4)
<b>10-14 yo (some vaxxed)</b>	240 (4.3)	521 (9.3)	1,369 (24.5)
<b>15-19 yo (~1/2 vaxxed)</b>	243 (3.8)	563 (8.7)	1,548 (23.9)
<b>All ages (mostly vaxxed)</b>	2,689 (2.8)	9,192 (9.4)	22,235 (22.8)

**COVID-19 CASES: DISTRICT DASHBOARD (SY2021-22)**

Dashboard outlines number of positive COVID-19 cases in the PSB school community by week and learning model. For the purpose of this dataset, weeks run **Friday to Thursday**.

Source: Public Schools of Brookline School Health Services Department

**Number of Positive Cases, by Week**

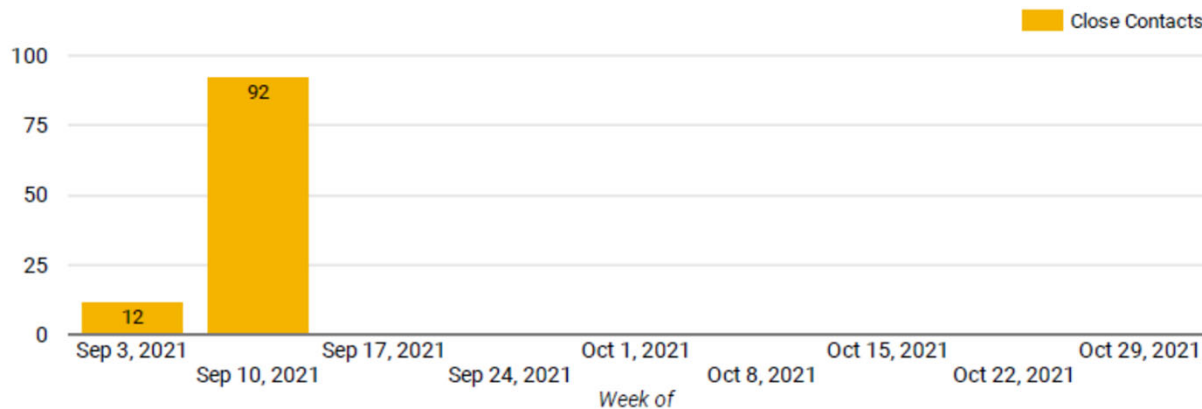


**TOTAL PSB CASES TO DATE: 15**

**Students: 10  
Staff: 5**

**Total cases among school-based students and staff: 15**

**Number of Close Contacts, by Week**



**TOTAL CLOSE CONTACTS\*: 104 close contacts connected to 11 cases**

**Total positive cases with no close contacts\* at school: 3**

*\*Close contacts are defined as anyone has interacted with a COVID-19 positive individual under the following circumstances: The interaction must be indoors, within six feet of distance, lasted for a combined total of 15 minutes or more over a 24 hour period, and occurred within a 48 hour period before the individual tested positive/displayed symptoms for COVID-19.*

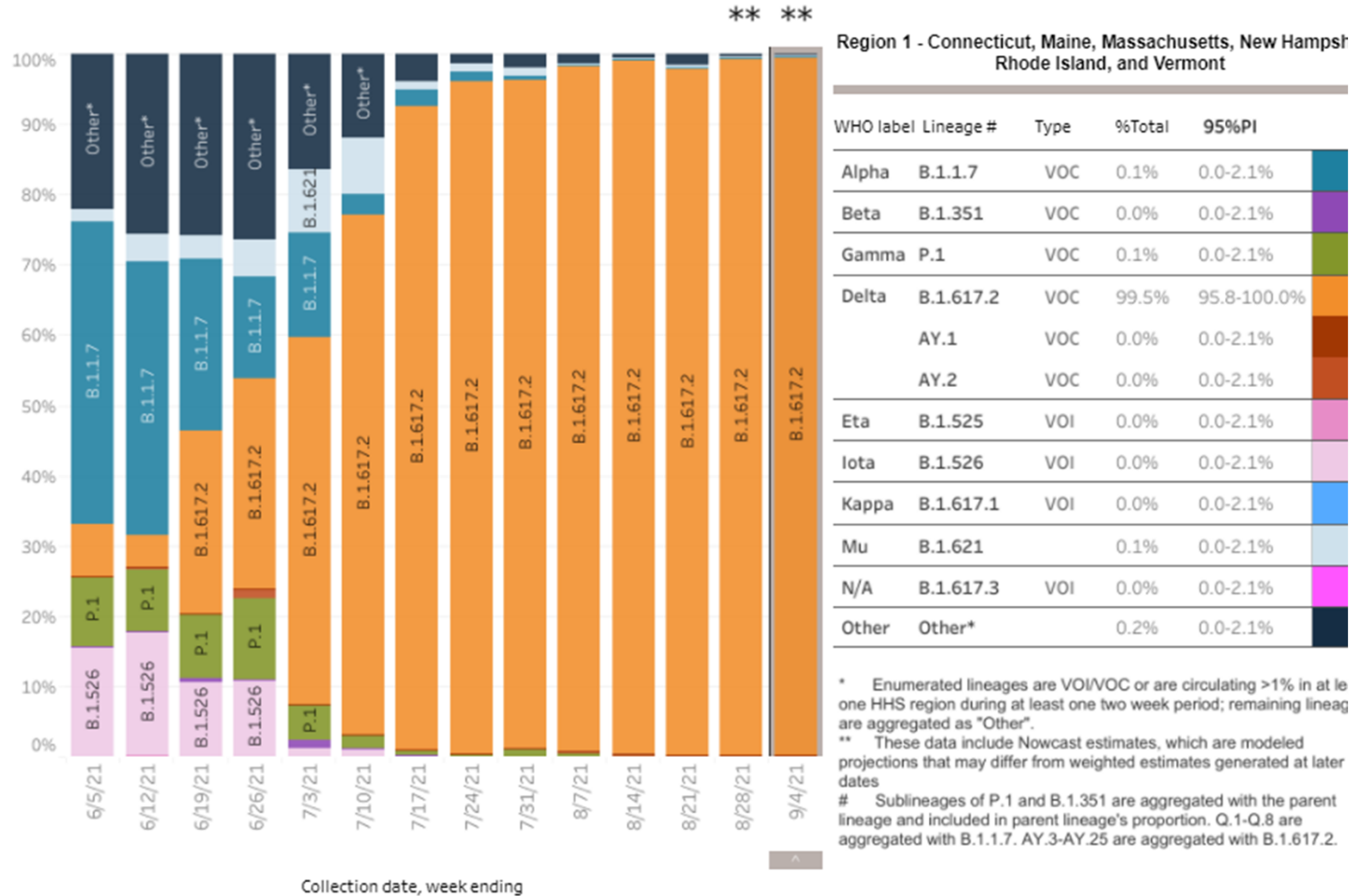
## PSB-Specific Vaccination Rates

- **Staff** – voluntary survey with roughly 50% participation revealed >95% fully vaccinated
  - **But** hard to account for sample bias issues to assess how representative this might be of the entire staff
- **Students**
  - MA DPH MIIS and other information sources available to PSB suggest at least ~70% of eligible students are fully vaccinated—likely more

# Variants Update

HHS Region 1: 5/30/2021 – 9/4/2021

HHS Region 1: 8/29/2021 – 9/4/2021 NOWCAST



Source: <https://covid.cdc.gov/covid-data-tracker/#variant-proportions>; <https://www.cdc.gov/coronavirus/2019-ncov/variants/variant-info.html>; <https://www.nejm.org/doi/full/10.1056/NEJMoa2108891>



# PSB Conservatory Mitigation Plan

## **Considerations for Safe General Music and Conservatory Classes**

*As we prepare for the coming school year, we plan to have as much normalcy in our Performing Arts program as possible. We are following and keeping abreast of guidance from DESE, CDC, and the National Association for Music Education ([NAfME](#)) in regards to music and in particular singing and wind instruments. In addition to mitigation factors such as greater air changes per hour than the minimum recommendation, students will sing with masks, and students who play wind instruments will use bell covers. When possible, Chorus and Band will be held in larger spaces such as auditoriums, gymnasiums, cafeterias and meet outside when applicable. Current guidance recommends three feet of distance for these classes when indoors, which may be reduced depending on local conditions. Orchestra, Guitar/Ukulele, Music Production and Music Exploration require no additional spacing. There is currently no mitigation or spacing needed for outdoor singing or wind instruments.*